



News from the Glen

A newsletter for the Glenabby Condominium community
September 2017

Table of Contents

<i>From the President's Desk.....</i>	<i>1</i>
<i>The Great American Eclipse of 2017.....</i>	<i>3</i>
<i>The Glen 10.....</i>	<i>6</i>
<i>Wildlife Observations.....</i>	<i>7</i>
<i>Monet's Garden.....</i>	<i>8</i>
<i>Advice from the SUNSET.....</i>	<i>9</i>
<i>Contact Information.....</i>	<i>10</i>
<i>Important Links.....</i>	<i>10</i>



From the Editors

Welcome to the September, 2017 issue of “News from the Glen”, the newsletter for the Glenabby community.

You can read and/or print any of the documents (including the newsletter) on the website. Most documents will require Adobe Acrobat Reader to read or print.

If you don't have an email address, you can receive a printed copy of the newsletter as well as any other documents as they change.

Contact us if you have any questions or suggestions.

Jim and Linda Pace 614 314-3076 glenabbynews@jimpace.eml.cc

From the President's Desk

September 22, 2017

Hi Everyone,

Well, I think Fall is upon us but the weather certainly doesn't reflect it. The weather is still hot which is good for the flowers if we kept them watered. We also had a very active time this summer to deal with some landscape issues identified with the Community walk thru which took place early summer. Dead or dying Juniper bushes were removed and many were trimmed back due to over-growth on some of the roofs and into the eaves troughs at various locations. Also, roof valleys were painted on all of the buildings along with the addition of missing kickout-flashing on many of the roofs. Five buildings were also painted during this time frame. The remaining six buildings

will be painted next year. We still have a few maintenance items left to complete. Very busy time !!

The road asphalt repairs were completed recently, which was very time consuming from identification to scheduling and final completion of this work activity. Thank You for your cooperation on this issue.

The Association Board of Directors has updated the Rules Handbook and made minor corrections to the document. Each Unit Owner will get a copy thru the mail from Case Bowen. The Association Board has also approved the Collection Policy and Procedure for the Community which a copy of the Policy is also part of the Rules Handbook. Both of these documents were reviewed by Legal and approved.

This time of the year is also when we will start working on the financial budget for 2018. This is a detailed process and should be available to the Unit Owners at the Fall Information meeting. The date for this meeting is scheduled for November 8, 2017 at 7:00pm at the Community Center. Please mark your calendars for this session.

Last item, Denise Brown our Property Manager for Case Bowen has informed the Association Board of Directors that she will be leaving the Case Bowen Co. We will be getting a new Property Manager effective October 15, 2017. When we get additional information, we will pass it along. We wish Denise the best of luck in her new Adventure.

Please take time to enjoy the Autumn Season and the associated splendid colors.

That's all for now.

Len Pavuk - President

The Great American Eclipse of 2017

A number of Glenabby residents viewed the Solar Eclipse on August 21, 2017. Some ventured into the path of totality while some viewed the partial eclipse from wherever they happened to be.

Sue and Andi Allen travelled to Asheville, NC and toured the Biltmore House the day before the eclipse. On eclipse day, they went to Greenville, SC and viewed the eclipse from the Swamp Rabbit Café & Grocery. “The overflow parking lot of the Swamp Rabbit Cate, actually the parking lot of the church next door, was the perfect place to view the eclipse. It wasn’t crowded at all. We could hear the cheers of the crowd at the café when totality occurred but we were able to quickly leave the parking lot and get out of town. The drive home was long, but it was worth it to view the totality of the 2017 Total Eclipse of the Sun.”



MJ could be seen on her patio watching the eclipse. The umbrella is not for rain, but to keep the sun off...it was a very hot day here (about 90 degrees). Jenny Holm, Stu and Sharon Herlan, Linda Pace, and John and Maggie Phillips watched the eclipse and the clouds from the bench in front of the Herlan’s condo. Jeffery Pace (4 year old grandson)



MJ Yeager viewed the eclipse from her patio.

watched and rode his bike. The clouds moved in just after we reached our 88% coverage. Most of the observers stopped observing at that point!



Grandson, Jeffery Pace knows how to be comfortable AND view the eclipse safely with his eclipse glasses!



Cereal box safe Sun viewer ("camera obscura" or "pinhole camera")



The Herlan House was a gathering place for the eclipse.



Stu Herlan looks like he REALLY got excited!

Jim Pace and oldest son, Brent, left Columbus on Sunday and stayed overnight in Scottsville, KY before travelling to Castalian Springs, TN (pop. 556) on eclipse day. While setting up in a hot gravel parking lot across the street from the local convenient store, a lady drove up and offered to let them view the eclipse from her shady, grass-covered lawn to view the eclipse with her and her family. Her name was

Mila Mason, and she is a country singer/song writer. Her 10 and 15 year-old daughters were very interested and excited about the eclipse and even posted some video on their Facebook page of the eclipse and me trying to explain it. Mila and 10 year-old May are in the picture with Jim and Brent. 15 year-old Rainey had gone back to bed by this time.



Jim took 420 photographs of the eclipse with his iphone and a telescope.



If you ask him, he MIGHT show you the entire 3 hour eclipse (compressed into a 2 minute video).

After the eclipse, Jim and Brent travelled back to Louisville, KY to spend the night with one of Linda's high school girlfriends. The 2 hr trip took 5 hrs because of traffic. But it was worth it to get the "eclipse cookies" she made!



The Glen 10

Get to know your neighbors in the Glen through this feature, we call “The Glen 10”. Ten questions and answers with a Glen Abby resident. This issue features new residents Julie and Scott Speicher (5280 Abby Gate Avenue)

If you would like to be a part of this feature, contact Linda Pace at lswpace@warpmail.net.

NAME: Julie and Scott Speicher

1. How long have you been a resident?

We moved to the Glenabby Community in July 2017.

2. What brought you to this community?

Our friends (the Paces) introduced us to the community and we loved everything about it.

3. Where did you move from?

We lived in Little Turtle (just down the road) for 31 years.

4. Are you a native Buckeye or were you born somewhere else? What states have you lived in before coming to Glenabby?

Scott was born in Pennsylvania. Julie grew up in New York, Florida, and Pennsylvania. When we were first married we lived in Saudi Arabia and Virginia.

5. Tell about your family.

We have two sons, Steven and William. They both live in the Columbus area. We also have two grandsons, Cyrus and Nathaniel.

6. What do/did you do for a living?

Scott was in information technology and Julie was a registered nurse.

7. What kinds of hobbies or interests do you have?

We both love reading, music, and travel. We are also very active in our church, Epworth United Methodist.

8. Any travels you would like to share?



We joined the Disney Vacation Club in 2010 and have been to Disneyworld several times. We have also visited Disneyland in California and have gone on several Disney cruises, including Hawaii, Alaska, and the Mediterranean.

9. There are a lot of animal residents in Glenabby. Anything to share about your pets?

We have two cats, Blaze and Dawn. They are siblings and are 16 years old.

10. There are so many places to visit and explore in the U.S.A. Do you have any recommendations for residents?

We like the Metro Parks.

EXTRA QUESTION...Any sports teams you cheer on?

We are both Penn State Grads and cheer for the Nittany Lions!

Wildlife Observations



Ever hear a neighbor say, "I just saw the most beautiful bird fly overhead...or saw a doe and her fawn last evening...or got excited seeing a wild turkey roosting in a tree? Well, these things really happen when you live at Glenabby! Send in your wildlife report with what you saw and the date/time (and photograph, if you have one) and each quarter we will publish a list. I'll give you an update this quarter from what I have heard from people and have seen:

Seems like most of the wildlife around here is now found near the pond. If some of you have never seen the pond, take a walk and discover it. I'm told that there are muskrats busy playing and doing whatever muskrats do in the water. Deer have also occasionally been spotted in the area. It is a haven for many birds, too.

Speaking of birds... the gold finches are numerous at the bird feeders in our community. My grandson, Jeffery, loves to stop and watch the feeder the Smiths have out when we are on our way home from pre-school. Last week he saw one hanging upside down and eating...he thought that was funny! Jim and I both saw a Cooper's Hawk (probably not the same one). One flew right by our living room window on September 9 and Jim took this photo of one on Ulry Road.



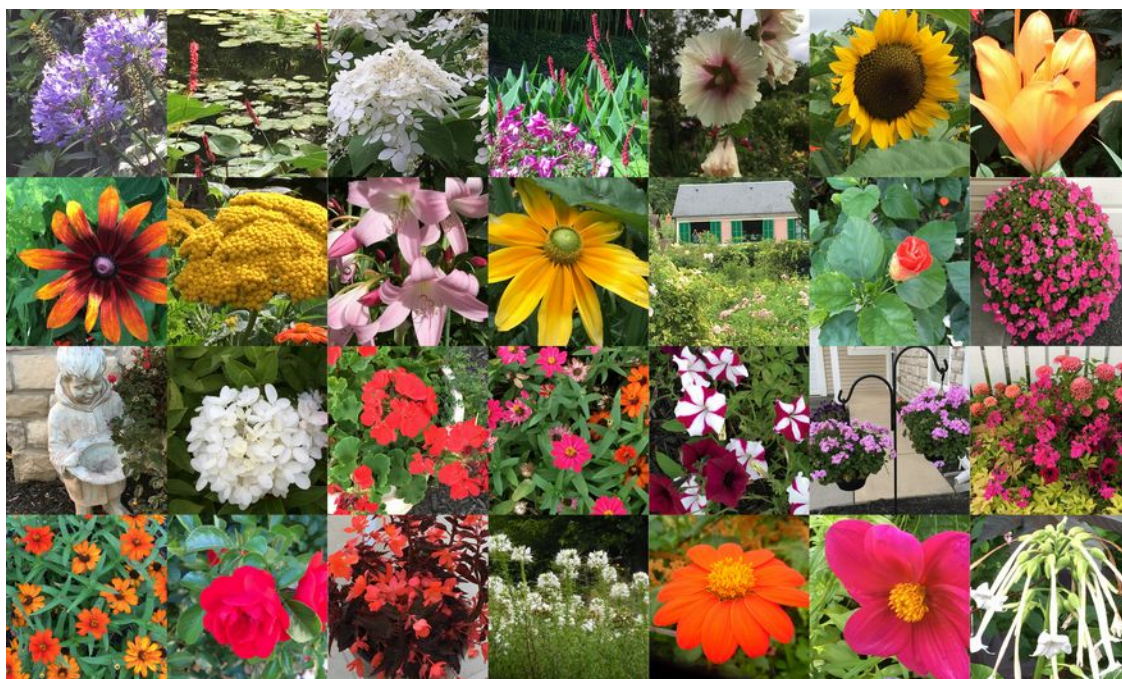
The most recent observations were seen by Linda Pace and new resident, Julie Speicher, on their way back from Westerville. A red fox went across the road in front of their car on Central College. Stu Herlan spotted a frog (or was it a toad) on his window sill.



If you like to see wildlife, we have two Metro Parks very close to us...Blendon Woods and Inniswood Gardens. Both are worth your time to take a walk, just sit and relax, or check out the programs that both offer.

Monet's Garden

Jim and Linda Pace took a river cruise to France in July. One of the places they visited was Monet's Garden in Giverny. Yes, THAT Claude Monet, the impressionist painter. Monet literally built the garden and pond

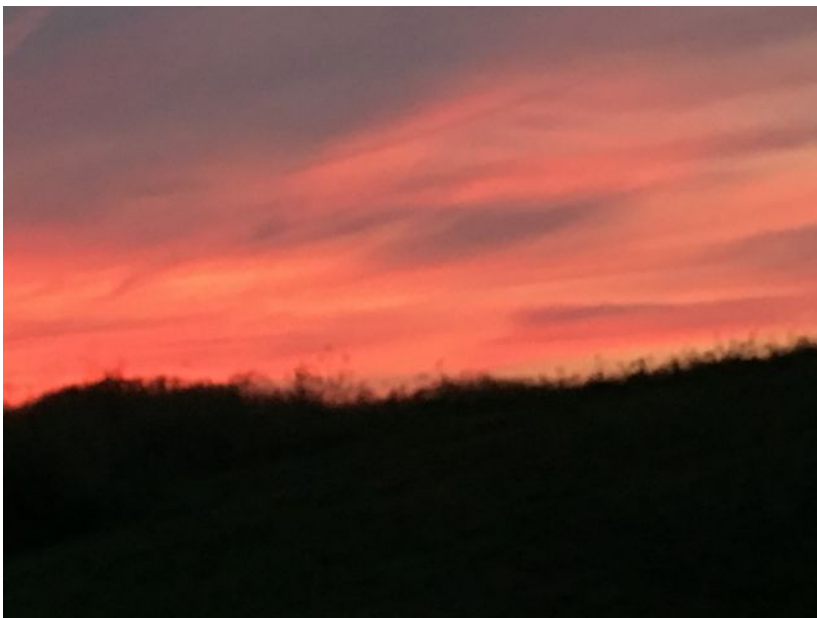


himself. He lived here for 43 years with his wife, Alice, and their eight children. Monet painted the waterlilies in the pond at different times of the day and in various light for 20 years. Hope you enjoy this collage of images from Monet's Garden...mixed in with pictures of the gardens at Glenabby!

If you would like to share an article and photos from your travels, please let your editors know. We look forward to hearing about more adventures of Glenabby residents.

Advice from the SUNSET

***Be amazing
Savor special moments
Close the day with beauty***



***Have a glow about you
Keep your inner fire burning
Show your true colors
Look forward to a brand
new day!***

Who needs to go to the beach or the mountains to view beautiful sunsets?... These two were photographed right here in our Genabby community (photos by Len Pavuk and Linda Pace)

Contact Information

<p>Newsletter Editors Jim and Linda Pace 614 314-3076 glenabbynews@jimpace.eml.cc</p> <p>Board Members Len Pavuk – President 614 933-0714 lenpavuk@gmail.com Don Kraemer – Treasurer 614 855-4871 Shaaron Fisher – At Large 614 203-6570 shaaronk@insight.rr.com Jim Pace – At Large 614 314-3076 glenabby@jimpace.eml.cc</p> <p>Name and Address Corrections Shaaron Fisher – At Large 614 203-6570 shaaronk@insight.rr.com</p>	<p>Community Center Use Reservations Shaaron Fisher 614 203-6570 shaaronk@insight.rr.com Don Kraemer 614 855-4871</p> <p>Community Calendar Tara Lamson 309-336-2148 tara.lamson@yahoo.com</p> <p>Case Bowen Management Company Denise Brown – Glenabby Community Manager 614 799-9800 ext. 28 dbrown@casebowen.com</p> <p>Website Questions Jim Pace 614 314-3076 glenabbyweb@jimpace.eml.cc</p>
---	--

<p>Important Links</p> <p><i>Glenabby Website</i> www.glenabby.org</p>	<p><i>The Case Bowen Company</i> www.casebowen.com</p>	<p><i>Spectrum Utilities Solutions, Inc.</i> www.spectrumutilities.com</p>
---	---	---